

## GF For Inverter Circuits Series

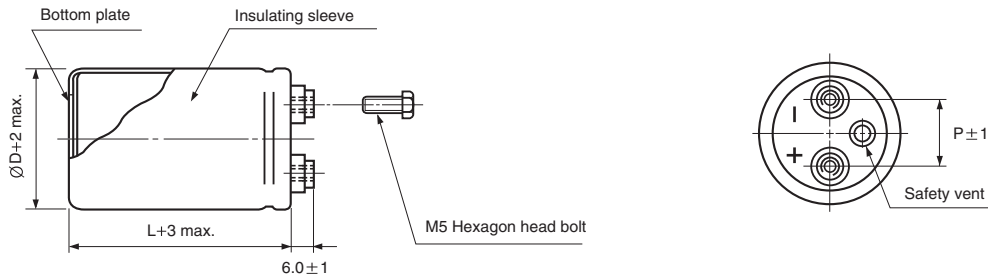
- Screw terminal series in compact case size
- High reliability, long life guaranteed for 5000 hours load life at 85°C
- Suited for use in industrial power supplies for inverters
- Complied to the RoHS directive



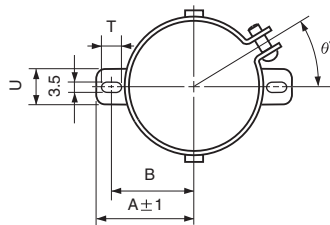
Item	Characteristics	
Operating temperature range	-25 ~ +85°C	
Capacitance tolerance	±20% at 120Hz, 20°C	
Leakage current max.	$I=3\sqrt{CV}$ (µA) (after 5 minutes)	
Dissipation factor max.	0.25 max. at 120Hz, 20°C	
Load life (after application of the rated voltage for 5000 hours at 85°C)	Leakage current	Less than specified value
	Capacitance change	Within ±30% of initial value
	tanδ	Less than 300% of specified value
Shelf life (at 85°C)	After 1000 hours no load test, leakage current, capacitance and tanδ are same as load life value. The measurement shall be performed at 20°C by the KS C IEC 60384 - 4	

### DRAWING

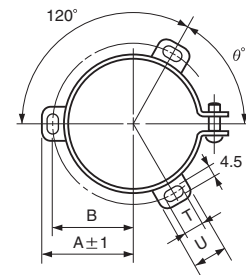
Unit : mm



### TWO LEGS ANGLE



### THREE LEGS ANGLE



### TWO LEGS ANGLE SIZE TABLE

ØD	B	A	T	U	θ°	P
35	24	29	7	10	30	12.7
51	33.6	39.9	6	14	30	22
63.5	40.8	46.8	6	14	30	28.6

### THREE LEGS ANGLE SIZE TABLE

ØD	B	A	T	U	θ°	P
51	32.9	38.9	7	12	60	22
63.5	38.4	45.3	7	14	60	28.6
76.2	44.5	51.5	8	16	60	31.8
89	50.8	61	8	16	60	31.8

# LARGE ALUMINUM ELECTROLYTIC CAPACITORS

**GF** series

## ● DIMENSIONS & MAXIMUM PERMISSIBLE RIPPLE CURRENT

WV Item μF	350			400			450		
	∅D×L (mm)	Ripple current (A rms)		∅D×L (mm)	Ripple current (A rms)		∅D×L (mm)	Ripple current (A rms)	
		40°C 120Hz	85°C 120Hz		40°C 120Hz	85°C 120Hz		40°C 120Hz	85°C 120Hz
2200	51 × 80	9.6	6.0	51 × 100	13.4	8.4	51 × 120	13.8	8.6
2700	51 × 100	11.4	7.1	51 × 110	16.0	10.0	63.5 × 100	16.8	10.5
3300	51 × 110	12.0	7.5	63.5 × 100	18.6	11.6	63.5 × 110	19.0	11.9
3900	63.5 × 100	13.1	8.2	63.5 × 100	19.7	12.3	76.2 × 100	22.2	13.9
4700	63.5 × 100	15.2	9.5	63.5 × 120	23.2	14.5	76.2 × 110	24.8	15.5
5600	63.5 × 120	16.8	10.5	76.2 × 110	26.4	16.5	76.2 × 130	25.4	15.9
6800	76.2 × 110	19.7	12.3	76.2 × 120	28.0	17.5	76.2 × 150	29.4	18.4
8200	76.2 × 120	23.5	14.7	76.2 × 140	29.9	18.7	89 × 140	31.5	19.7
10000	76.2 × 140	27.7	17.3	89 × 140	32.8	20.5			
12000	89 × 140	31.2	19.5	89 × 150	33.6	21.0			

WV Item μF	500			550			600		
	∅D×L (mm)	Ripple current (A rms)		∅D×L (mm)	Ripple current (A rms)		∅D×L (mm)	Ripple current (A rms)	
		40°C 120Hz	85°C 120Hz		40°C 120Hz	85°C 120Hz		40°C 120Hz	85°C 120Hz
1000				51 × 100	6.7	4.2	51 × 100	9.8	6.5
1200				51 × 110	8.0	5.0	63.5 × 90	11.1	7.4
1500				51 × 130	9.6	6.0	63.5 × 100	13.2	8.8
1800	63.5 × 100	10.4	6.5	63.5 × 100	10.7	6.7	76.2 × 90	15.0	10.0
2200	63.5 × 120	12.3	7.7	63.5 × 120	12.8	8.0	76.2 × 100	17.9	11.9
2700	76.2 × 100	14.1	8.8	76.2 × 100	15.0	9.4	76.2 × 120	20.9	13.9
3300	76.2 × 120	16.6	10.4	76.2 × 130	17.6	11.0	76.2 × 140	24.6	16.4
3900	76.2 × 130	19.4	12.1	76.2 × 140	20.0	12.5	89 × 120	23.4	15.6
4700							89 × 140	27.5	18.3
5600							89 × 160	31.5	21.0

## ● FREQUENCY COEFFICIENT OF PERMISSIBLE RIPPLE CURRENT

WV	Frequency	50Hz	120Hz	300Hz	1kHz	3kHz
350 ~ 600		0.8	1.0	1.1	1.3	1.4