

# 915MHz Two-Port SAW Resonator

MODEL NO.: TD0105A

REV. NO.:2

## A. FEATURES:

1. 2-Port Resonator(180 Degree)

## B. MAXIMUM RATING:

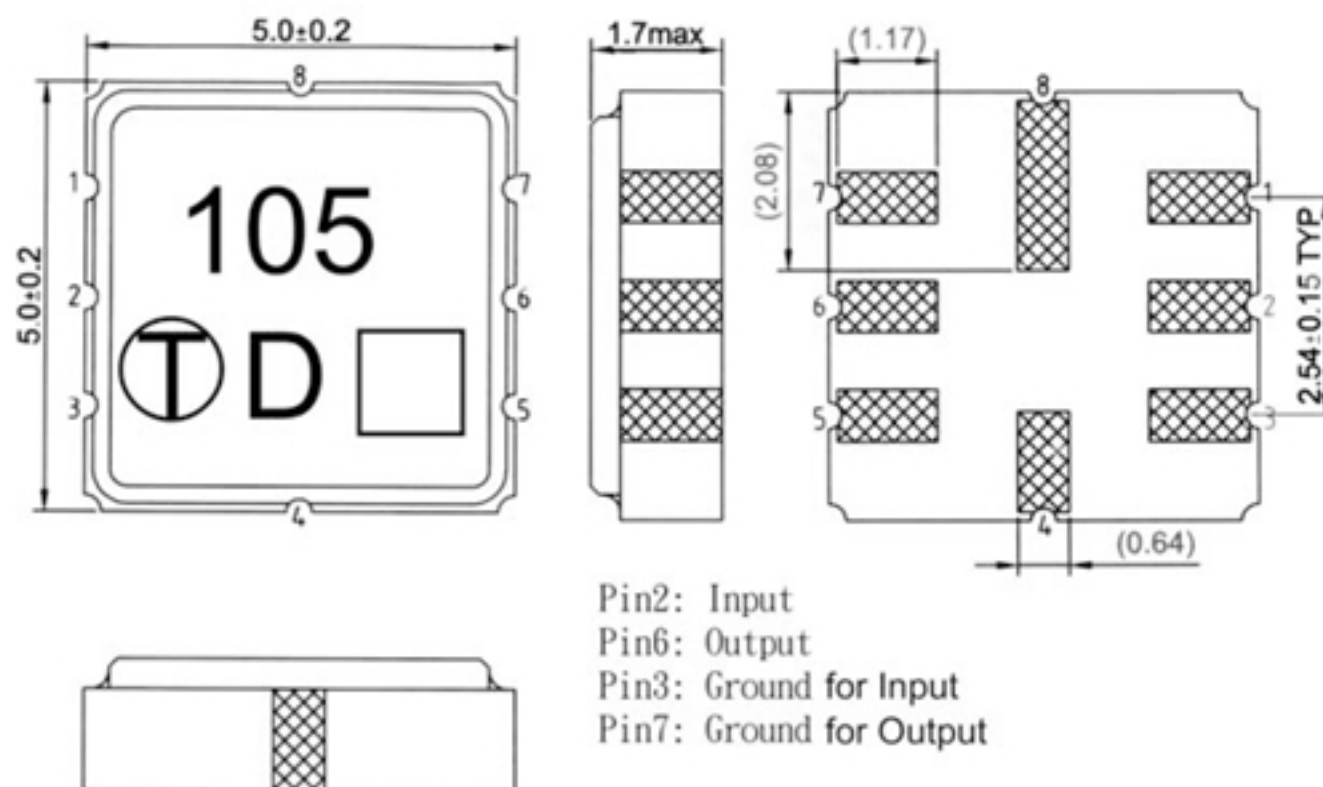
- 1.Power Dissipation: +0 dBm.
- 2.DC voltage: 30 V.
- 3.Storage Temperature: -40 °C to 85 °C.
- 4.Operating Temperature:-30 °C to 85 °C

## C. ELECTRICAL CHARACTERISTICS:

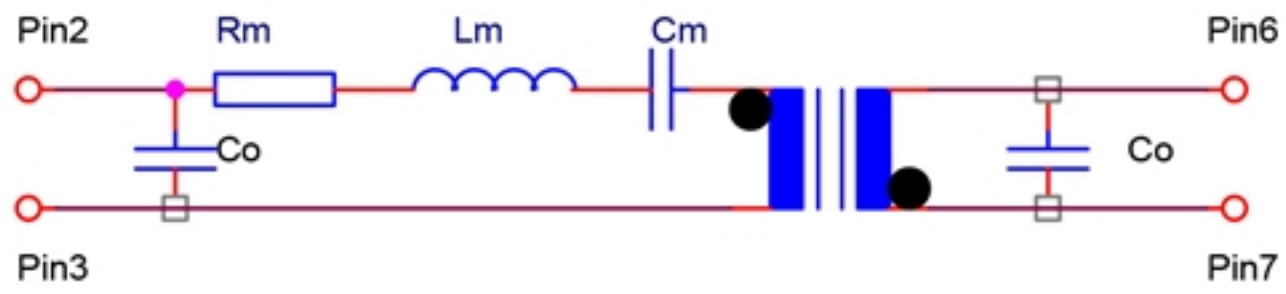
Characteristic	Units	Minimum	Typical	Maximum
Center frequency <b>Fr</b>	<b>MHz</b>	914.85	915	915.15
Insertion Loss <b>IL</b>	<b>dB</b>	-	8	9
Equivalent Circuit Elements				
Parallel capacitance <b>Co</b>	<b>pF</b>	-	1.9	
Motional resistance <b>R1</b>	<b>Ohm</b>	-	125	
Motional inductance <b>L1</b>	<b>μH</b>	-	134.5	
Motional capacitance <b>C1</b>	<b>fF</b>	-	0.225	
Temp.coeff.	<b>ppm/c*2</b>	-	0.032	-
Turnover To	<b>deg.C</b>		25	
Package size		SMD5x5mm		

RoHS Compliant  
Lead free  
Lead-free soldering

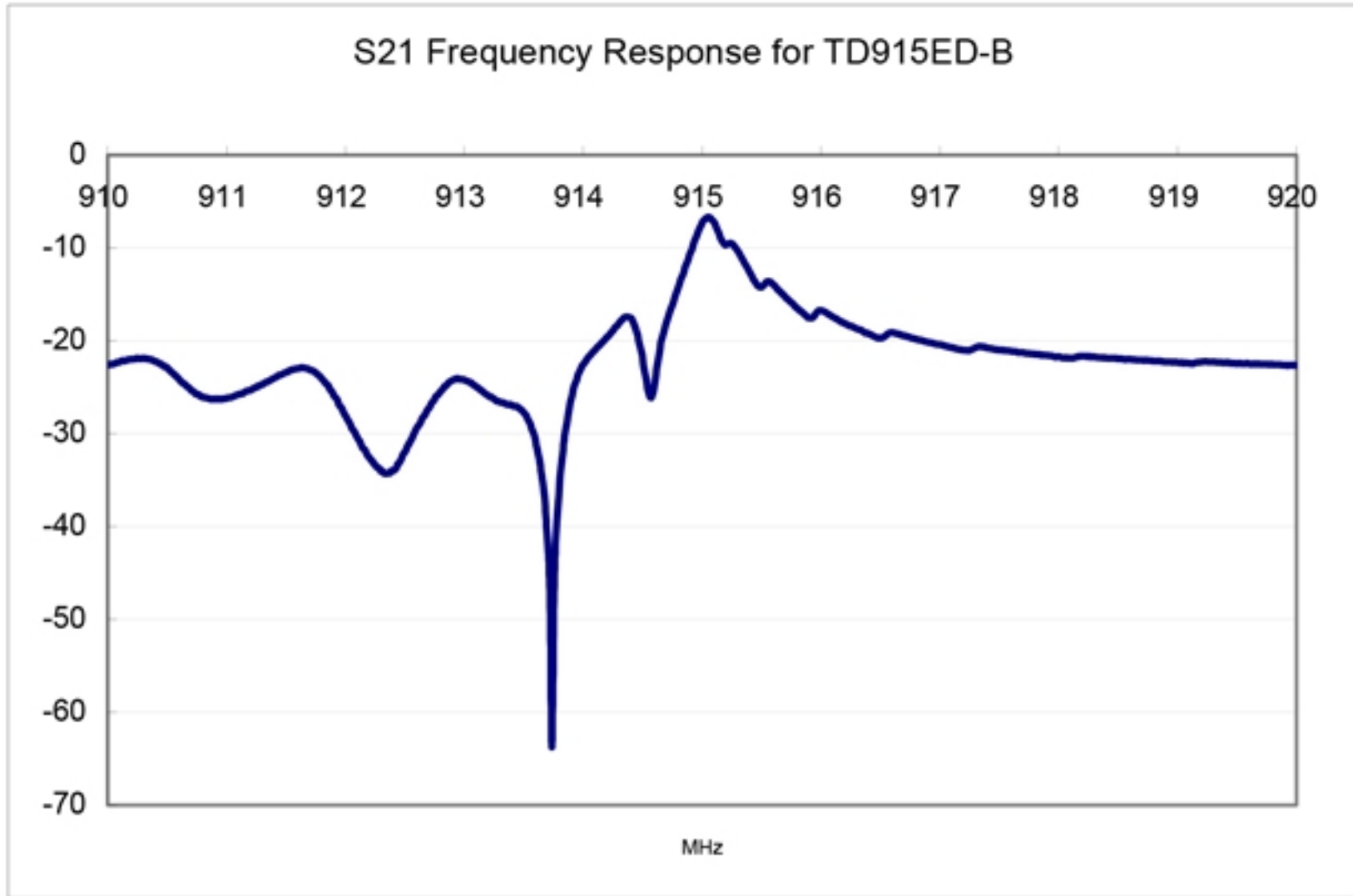
## D. OUTLIN DRAWING:



## E. EQUIVALENT CIRCUIT



## F. FREQUENCY CHARACTERISTICS:



## G. PACKING:

### 1. REEL DIMENSION

