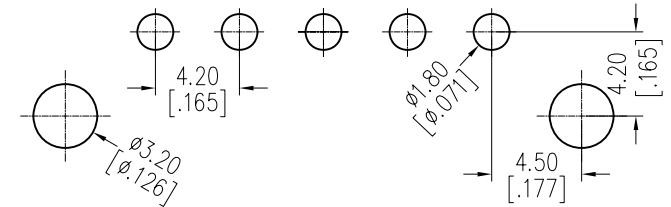
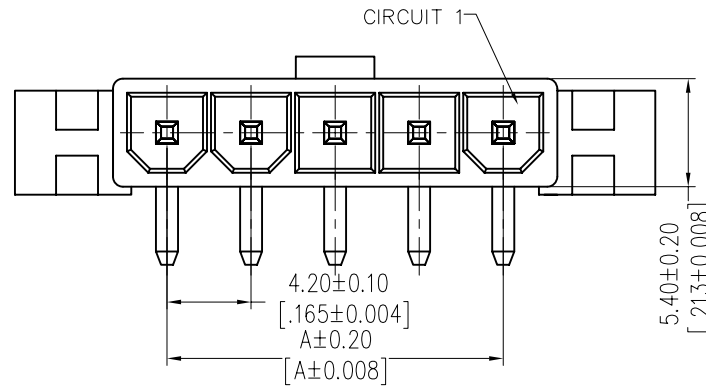


HSF

NOTES:
 Rated Current: 9.0A
 Contact Resistance: 30mΩ max
 Withstand Voltage: 1000V AC/Minute
 Insulation Resistance: 1000MΩ min
 Operation Temperature: -25°C to +85°C

Contact Material: Brass
 Contact Plating: Au Or Sn over Ni
 Insulator Material: PA66

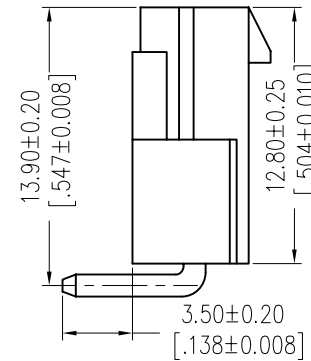
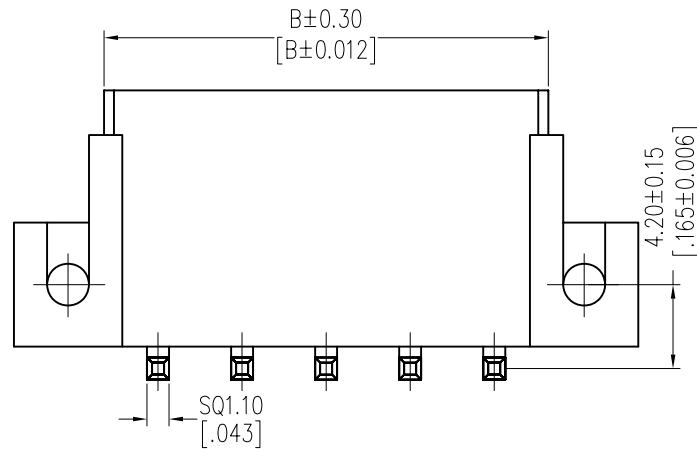
Recommended P.C.B Layout(Top Side)
 (PCB BOARD TOLERANCE ±0.05)



Ordering Information

WF4202 -1 WR XX W 0 3

No. of Row Single Row: 1
 No. of pins 02-05P: 2
 Contact Plating: S0=Gold Flash/Tin, S3=10u"Gold/Tin, S4=15u"Gold/Tin, S5=30u"Gold/Tin, G0=Gold Flash, G3=10u"Gold, G4=15u"Gold, G5=30u"Gold, Blank=Tin
 Color: B=Black, T=Natural, W=White
 Packing: 0=PE Bag, T=Tube



Dimensional & Ordering Information

Circuit	Part No.	Dimension	
		A	B
02	WF4202-1WR02W03	4.20	9.60
03	WF4202-1WR03W03	8.40	13.80
04	WF4202-1WR04W03	12.60	18.00
05	WF4202-1WR05W03	16.80	22.20

REV	DATE	MODIFICATION DESCRIPTION	CHANGE	OPERATION		DRAW	DATE	SCALE	FIT	PART NO.
				X.X	±0.40					
				X.XX	±0.25	CHECK	DATE	SIZE	A4	TITLE: 4.20 WAFER SINGLE ROW 90° DIP
				X.XXX	±0.15	APPROVE	DATE	SHEET	1/1	Customer NO.
				Angle	± 3'			PROJ.		
				DIM	TOL					